

348 Sani-Master[™]

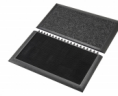
Disinfecting foot bath with drying entrance mat



Ergonomic, Anti-fatigue & Safety Matting - Hygiene Matting

348 Sani-Master™

This 19-mm thick extendable mat cleans, sanitizes and dries shoes, recommended at entrances to prevent contamination. As traffic passes, rubber tips bend to immerse soles in disinfectant solution, absorbing mat section cleans and dries shoes to prevent slips.



- Convenient mat size fits most doorways
- Extendable sections for a longer drying zone for wet sanitized shoe soles
- 100% tough natural rubber compound; designed to resist to most chemicals and variations in temperature
- Patented design of integrated disinfection and drying zone

Recommended use

- Indoor/Portico
- At doorways, starter rooms, packaging areas, laboratories, employee locker rooms, break rooms, refuse areas and receiving areas. Any place where spread of contamination needs to be limited.
- Heavy duty

Colors:

- Charcoal/Black
- Logo

Sizes:

- 91.4cm x 105cm
- 91.4cm x 152.5cm
- 91.4cm x 200cm

Accessories:

- 348M Sani-Master™ Extension

Ergonomic, Anti-fatigue & Safety Matting - Hygiene Matting Sani-Master™

General

Brand	Notrax®
Category	Hygiene Matting
Product Number	348
Product Family	Industrial & Commercial Matting
Product Group	Ergonomic, Anti-fatigue & Safety Matting
Product Name	Sani-Master™
Recommended use	At doorways, starter rooms, packaging areas, laboratories, employee locker rooms, break rooms, refuse areas and receiving areas. Any place where spread of contamination needs to be limited.
Shipping Location	Barendrecht 2992SB, NL
Sub brand	V-defence
Type	Wet Areas - Hygienic Mats
Update trigger	20210412-0728
Usage Intensity	Heavy duty

Sustainability

Reach	Reach compliant (Registration, Evaluation, Authorization and Restriction of Chemicals).
Sustainability	Recyclable material
Warranty	1

Tests

Surface Flammability	Pass
----------------------	------

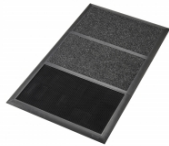
Technical Specifications

Application	Industrial Environments
Edges	Bevelled rubber borders on all four sides
Material	Natural rubber
Material Group	Natural rubber
Process	Compression Moulding

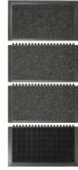
Sani-Master Charcoal



348S0033CH



348S0035CH



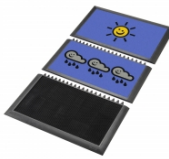
348S0037CH

Art. nr.	Dimension (cm)	Weight (kg)	Height CM
348S0033CH	91.4cm x 105cm	11.4	1.9
348S0035CH	91.4cm x 152.5cm	17	1.9
348S0037CH	91.4cm x 200cm	20.35	1.9

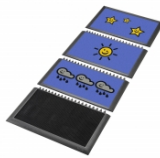
Sani-Master Logo



348S0033WH



348S0035WH



348S0037WH

Art. nr.	Dimension (cm)	Weight (kg)	Height CM
348S0033WH	91.4cm x 105cm	10.65	1.9
348S0035WH	91.4cm x 152.5cm	15.5	1.9
348S0037WH	91.4cm x 200cm	20.35	1.9

Accessories

348M Sani-Master™
Extension