



Justrite Safety Group

546 Diamond Flex™

Heavy duty diamond plate workstation mat



Ergonomic, Anti-fatigue & Safety Matting - Dry Areas Standalone Matting

546 Diamond Flex™

The 18.4 mm thick platform elevates and insulates the worker from the hard ground while the bulleted domes underneath allow the mat to bend and 'flex' with every movement.

- 100% natural rubber compound
- Standard size mats for individual workstations
- Loose lay and require no installation
- Highly visible yellow safety ramps included on all sides for added safety to prevent tripping

Recommended use

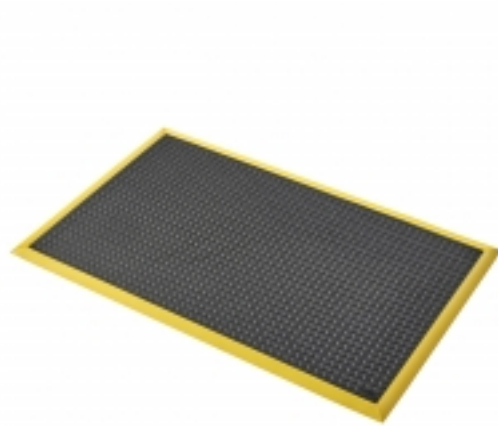
- Dry Areas
- For placement in manufacturing plants, assembly lines, picking, packing and logistics warehouses, individual work stations.
- Heavy duty

Colors:

- Black
- Black/Yellow

Sizes:

- 102 cm x 163 cm
- 102 cm x 163 xm
- 97 cm x 163 cm
- 97 x 163 cm



Ergonomic, Anti-fatigue & Safety Matting - Dry Areas Standalone Matting

Diamond Flex™

General

Brand	Notrax®
Category	Dry Areas Standalone Matting
Product Number	546
Product Family	Industrial & Commercial Matting
Product Group	Ergonomic, Anti-fatigue & Safety Matting
Product Name	Diamond Flex™
Recommended use	For placement in manufacturing plants, assembly lines, picking, packing and logistics warehouses, individual work stations.
Series	Diamond Flex™
Shipping Location	Barendrecht 2992SB, NL
Type	Dry Areas - Heavy Duty Industrial
Update trigger	20210310-1301
Usage Intensity	Heavy duty

Sustainability

Reach	Reach compliant (Registration, Evaluation, Authorization and Restriction of Chemicals).
Warranty	1

Tests

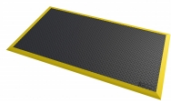
Slip Rating	R10
-------------	-----

Technical Specifications

Application	Dry industrial areas
Edges	Bevelled rubber borders on all four sides
Material	100% Natural rubber
Material Group	Rubber
Process	Compression Moulding

Diamond Flex™ Black/Yellow

546S3864BY

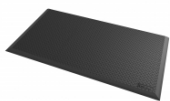


546S4064BY

Art. nr.	Dimension (cm)	Weight (kg)	Thickness (mm)
546S3864BY	97 x 163 cm	21.36	18.4
546S4064BY	102 cm x 163 xm		

Diamond Flex™ Black

546S4064BL



546S3864BL

Art. nr.	Dimension (cm)
546S3864BL	97 cm x 163 cm
546S4064BL	102 cm x 163 cm