



Justrite Safety Group

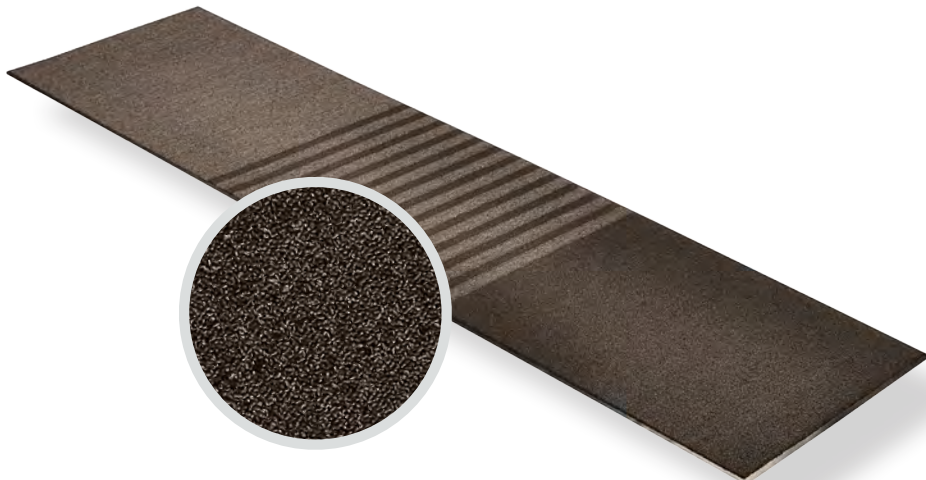
137 - OPERA™
PRODUCT INFORMATION BROCHURE





For over 70 years, the name Notrax[®] has meant superior quality, service, and innovative products. Now this brand is a cornerstone of Justrite Safety Group, offering the widest selection of products to a variety of markets and applications including entrance mats, anti-fatigue/safety mats, and products designed specifically for use in professional food service environments. Notrax[®] offers a complete selection of floor matting options to meet any application requirement, quality expectation, and budget.

- **Track record of manufacturing high quality mats for over seventy years**
- **All products are manufactured in ISO certified facilities**
- **Notrax[®] offers anti-fatigue matting, entrance matting, safety matting, food service matting and specialty mats designed for a variety of industries**



137 - OPERA™ A Notrax® exclusive combines three functional mats into a single mat design. Zone 1 - A looped non-absorbent yarn scrapes debris and moisture. Zone 2 - Combines a looped scraper yarns with absorbent Decalon® looped pile to begin the drying process. Zone 3 - Pure Decalon® looped pile to complete the drying function. All yarns are color-coordinated to combine beauty and functionality and is perfectly suited for all large upscale entrances including offices, hotels, and professional office buildings.

Material: Polypropylene Carpet W/Vinyl Backing

Features and Benefits:

- Three mat "Scrape & Dry" system in a single mat
- Dense combination of scraping and absorbent yarns ensure maximum performance
- 26 ounces tufted loop pile yarn per square yard
- Low profile for use in narrow clearance doorways
- Vinyl backing ensures minimal buckling and mat movement
- Recommended product as part of the GreenTRAX™ program for "Green Cleaning" environments





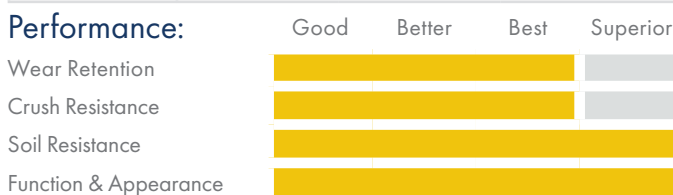
MODEL: 137

SPECIFICATIONS

APPLICATIONS

- Upscale Entrances
- Offices
- Hotels
- Lobbies

Stock Sizes	3'x10', 3'x12', 4'x10', 4'x12', 6'x10', 6'x12'	
Thickness	3/8"	
Colors	 Black	 Grey



TESTING DATA

Test	Test Description	Results
ASTM D6540	Accelerated Soiling Method	Based on Visual Inspection 4.5 - Vacuum Rating 5.0 - Rating After Extraction
ASTM D412	Breaking Load/Elongation	189.4 lbs/in ²
ASTM 5252-98a	Accelerated Wear - 4,000 cycles (Hexapod Tumble Drum Tester)	Appearance: 2.5 Color: 2.5
ASTM D3936-05	Delamination	Exceeds Backing Strength
-	Water Retention	Weight Gain = 79.36% (0.27 gal/yd ²)
ASTM D1335-05	Tuft Bind of Pile Yarn	11.4 = Superior
CPSC FF 1-70	Surface Flammability of Carpets and Rugs Ignition Characteristics - Finished Textile Floor Covering Material	Pass

*Testing performed by an independent test laboratory.

NOTRAX®

5655 West 73rd Street
Chicago, IL 60638

PHONE: (800) 621-2802

FAX: (800) 322-7105

EMAIL: saleschicago@checkers-safety.com

www.notrax.com



A PRODUCT OF:



Justrite Safety Group is the leading source of safety equipment for flammables and hazardous materials storage and handling, asset protection, environmental protection spill containment, absorbents, specialized chemical storage, cable management, safety showers and eye/face washes, matting, and vehicle safety equipment. Learn more at Justrite.com, Checkers-safety.com, and Notrax.com.